

Custom Applications

For one of any number of reasons the part you need may not be an off-the-shelf item. It could be a new design, a specialized application, or the need for a low-cost production adapter that will require a custom interconnect. For this you will need to put a specialist on your team.

CUSTOM ADAPTER TEAM

There could be several solutions, to find out the right one for you, our team has more experience than anyone in the industry. First, you will be assigned a support specialist that will be with you on through every step of the design. You will also have a design engineer and a support team assisting on your project.

PERFORMANCE

When speed, trace length, impedance, or board area are an issue, we make your priority our priority. We have the engineering knowledge to understand your issues and the expertise to meet your requirements.

COST

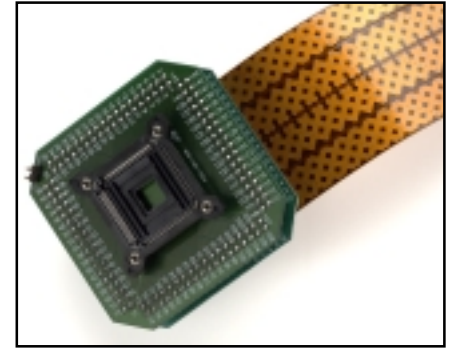
There are thousands of tricks in this industry that will save you money and we know them all. Be it depopulating a socket to create a standard item, saving both time and money, or using special manufacturing techniques, we will give you a full set of options.

FAST

How does 2 weeks sound? This requires a solid specification, and that component parts are readily available, but we have delivered several designs with lightening speed. Standard delivery is **4-6 weeks** and is much less expensive, and much more advisable. Every design is different, to find out how fast we are, call us.

EMULATION

HEIGHT, SPACE LIMITATIONS
HIGH SPEED SOLUTIONS
MULTI-LAYER DESIGNS TO
CONTROL SIGNAL
DEGRADATION



144 pin Emulator Adapter with high speed flex-cable

LOGIC ANALYSIS

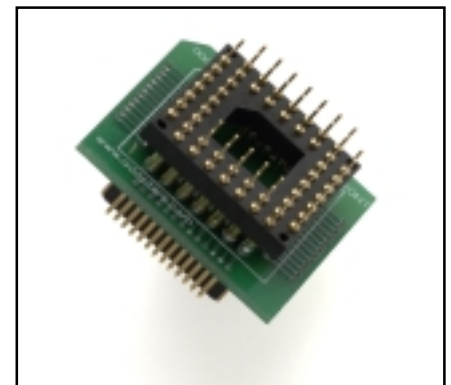
ADAPT TO TOMORROWS
MOST ADVANCED
INSTRUMENTS



Our fast delivery saves your project

BGA

CHIPSCALE PROBING
PACKAGE CONVERTERS
SURFACE MOUNT SOCKETS



Cost saving package converters

PRODUCTION

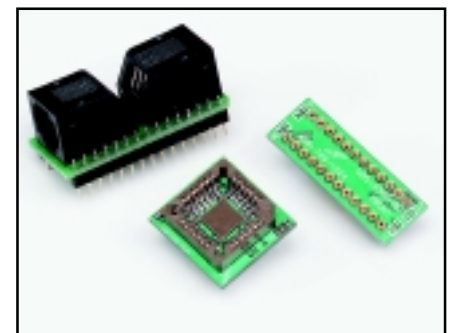
CHIP SHORTAGES
HIGH-RUN, LOW-COST
I.C. SOCKETS
FAST DELIVERY

PROGRAMMING

HIGH VOLUME DEVICE
HANDLERS

PROTOTYPING

LAB CARDS



Large or small we have the solution